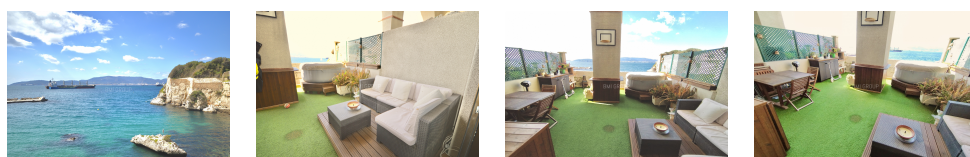


SOU628
Available

ROSIA PLAZA

£950,000



FEATURES

- 2 Bedrooms
- 1 Bathrooms
- Air conditioning
- West facing
- Tandem parking space
- Ground floor
- Walk-in wardrobe
- Beautiful views
- Large Terrace
- Fully Furnished
- Tandem Parking

New on the market and exclusive to BMI! Stunning two bedroom, three bathroom duplex apartment situated within this luxury development, recently refurbished to a high standard. With a West-Facing aspect, this property benefits from stunning sea / bay views towards the Strait and Africa and can all be enjoyed from the 25m² terrace, a perfect place to spend the summer months with friends and family or enjoy a drink watching the sunset. The spacious living room includes a dining table as well as fitted bookshelves and TV unit, which leads on to a large kitchen with ample storage space and breakfast bar/stools. Heading up the stairs we arrive at the main bedroom with walk-in wardrobe and modern en-suite bathroom, and the second bedroom with fitted wardrobes which also has an en-suite bathroom. Both rooms are very spacious and have ample storage space. This property has air-conditioning throughout and tandem private parking inclusive. Ideal Investment opportunity for buy-to-let. Viewing is highly recommended. Please contact +350 200 51010 or info@bmigroup.gi to arrange a viewing!

| | | | |
|-----------------------|------------------|-------------------------|-----------|
| Interior Size: | 90m ² | Ownership: | Leasehold |
| Exterior Size: | 25m ² | Rates: | TBC |
| Plot Area: | N/A | Service Charges: | TBC |
| Furnishing: | Fully Furnished | Price per sqm: | £9,268.29 |

BMI Group Limited, Unit 7 Portland House, Glacis Road, P.O. Box 469, Gibraltar

✉ info@bmigroup.gi ☎ (+350) 200 51010

www.bmigroup.gi