

COMM559  
Available

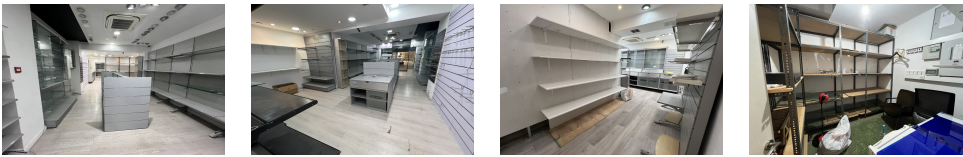
## MAIN STREET

**£6,000 pcm**



### FEATURES

- WC



Nestled on bustling Main Street, this commercial unit boasts an enviable location with a high volume of foot traffic, making it a prime spot for business. With an internal area of 100 square meters, it offers ample space for various endeavors. One of its standout features is the impressive frontage adorned with large, eye-catching windows. These expansive windows provide excellent visibility for your business, allowing you to showcase your products or services to the steady stream of passersby. This unit is not just a space; it's a strategic opportunity for a successful enterprise to thrive in a prominent and bustling setting. No premium. 3 months deposit required.

<b>Interior Size:</b>	100m <sup>2</sup>	<b>Ownership:</b>	Leasehold
<b>Exterior Size:</b>	N/A	<b>Rates:</b>	£1300 Per Quarter
<b>Plot Area:</b>	N/A	<b>Service Charges:</b>	TBC
<b>Furnishing:</b>	Unfurnished	<b>Price per sqm:</b>	£0