

SOU774
Available

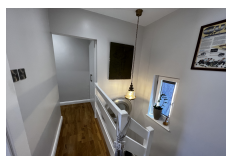
SOUTH DISTRICT

£950,000



FEATURES

- 4 Bedrooms
- 2 Bathrooms
- Air conditioning
- Ceramic wood effect flooring
- Double glazing
- Shed
- 2 Lofts
- Partly Furnished
- Lock Up Garage



This stunning 4-bedroom townhouse, located in the very desirable development of Europa Walks. Boasting meticulous refurbishment, it offers a luxurious living experience like no other. With a generous internal area of approx. 110m², this home provides ample space for your family's comfort. Upon entering, you'll be greeted by a spacious living area that seamlessly connects to a beautifully designed open plan kitchen. The kitchen features top-of-the-line appliances and stylish finishes. What truly sets this townhouse apart are its two charming patios, each approximately 15m² in size. These outdoor spaces are perfect for enjoying al fresco dining, gardening, or simply relaxing in the fresh air. The four bedrooms are thoughtfully designed, offering plenty of natural light and closet space. Additional features of this townhouse include modern bathrooms, high-quality flooring throughout, and energy-efficient fixtures. Don't miss the opportunity to make this impeccably refurbished townhouse your new home. It's a harmonious blend of contemporary living, providing a lifestyle that's truly exceptional. Schedule a viewing today and experience the beauty and comfort of South Walk living at its finest. Includes private car parking space. Option to buy lock-up garage at an extra premium. 3 years residency is required.

Interior Size:	110m ²	Ownership:	Leasehold 146
Exterior Size:	30m ²	Rates:	£33 Per Month
Plot Area:	N/A	Service Charges:	£134 Per Month
Furnishing:	Partly Furnished	Price per sqm:	£7,600.00